

# DirectControl for Macintosh OS X

*Centrify DirectControl delivers Active Directory authentication and access control, plus the industry's only Group Policy solution for Mac OS X*

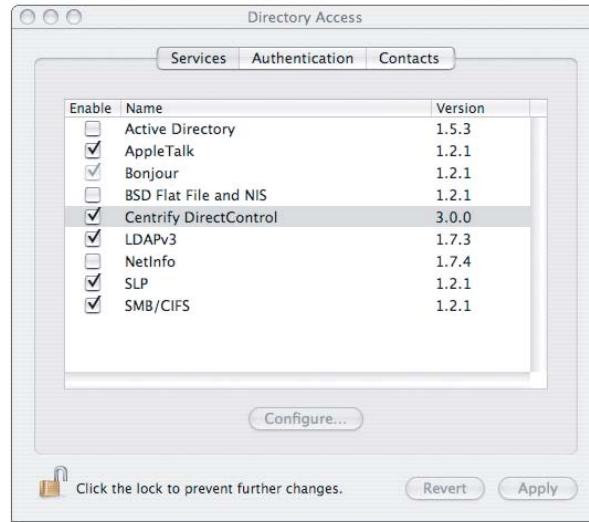
Centrify DirectControl enables Active Directory authentication and access control for Mac OS X and is the only solution that enables IT managers to centrally secure and configure Mac OS X systems via Active Directory Group Policy. With DirectControl, IT managers can strengthen security and enhance IT efficiency by establishing a single point of administration — Active Directory — from which to manage user accounts, computers, and the access controls and policies associated with them.

DirectControl for Mac OS X is part of a comprehensive suite that also extends Active Directory services to UNIX and Linux systems, providing a single, seamlessly integrated access control and identity management solution your heterogeneous enterprise.

## Strengthen Security

IT managers can strengthen security and better comply with regulatory requirements by using DirectControl to:

- Extend centralized, Active Directory-based single sign-on (SSO) to Mac users — no more manual provisioning of local accounts that may live on even after an employee leaves the company.
- Use DirectControl's unique Zone technology to enable users to log on only to the Mac systems they really need to access.
- Delegate administration of Zones of OS X systems to Mac admins without giving them privileges on any other systems.
- Use DirectControl's built-in reporting to verify for auditors who has access to which systems.
- Globally enforce Active Directory-defined password policies, regardless of where users log in.
- Enable offline login to Mac laptops with cached credentials (similar to Windows XP) without creating an account on the local computer.



Centrify DirectControl for Mac OS X plugs into the native Mac directory services, enabling the Mac to fully participate in a Windows Active Directory domain.

**“With Centrify, we’ll know who logs in and be able to protect resources accordingly. Secondly, we wanted something that integrated easily into the Active Directory structure. And thirdly, we wanted something that was easy to deploy. I would say we’re achieving all three of those with Centrify.”**

**Jim Thie**

**CIO, Habitat for Humanity**

Quoted from “Managing Active Directory Users Getting Easier” by Kevin Ferguson, SearchWinIT.com

## Enhance IT Efficiency

IT managers can streamline operations and reduce costs by using DirectControl to:

- Globally configure Mac systems via Active Directory Group Policy — manage DirectControl configuration and sudo settings; lock down System Preferences; enforce screensaver locking, and more. (See the reverse side of this data sheet for details.)
- Perform large-scale remote installation through Apple Remote Desktop.
- Centrally control configuration features that previously had to be managed (if it was possible at all) at each local computer: transparent SSO to Windows files shares; home directory automounts to Windows file shares; and assignment of UIDs and the groups/GIDs that assign and control access for file permissions consistency.

## Benefits for End-Users

End-users will be glad to know that DirectControl brings them the following benefits as well:

- You have only one user ID and one password to remember.
- You can log in to any computer (Macintosh or Windows) that belongs to the management Zones to which you have been assigned, regardless of whether you have ever logged into that system before.
- There is no effect on the way you work; the DirectControl Agent installed on your Mac seamlessly and transparently connects you to the Windows network without affecting any other system components.
- If you are part of a small group of Mac users within a Windows-based organization, you can install DirectControl yourself and work with your IT department to integrate your system with Active Directory.

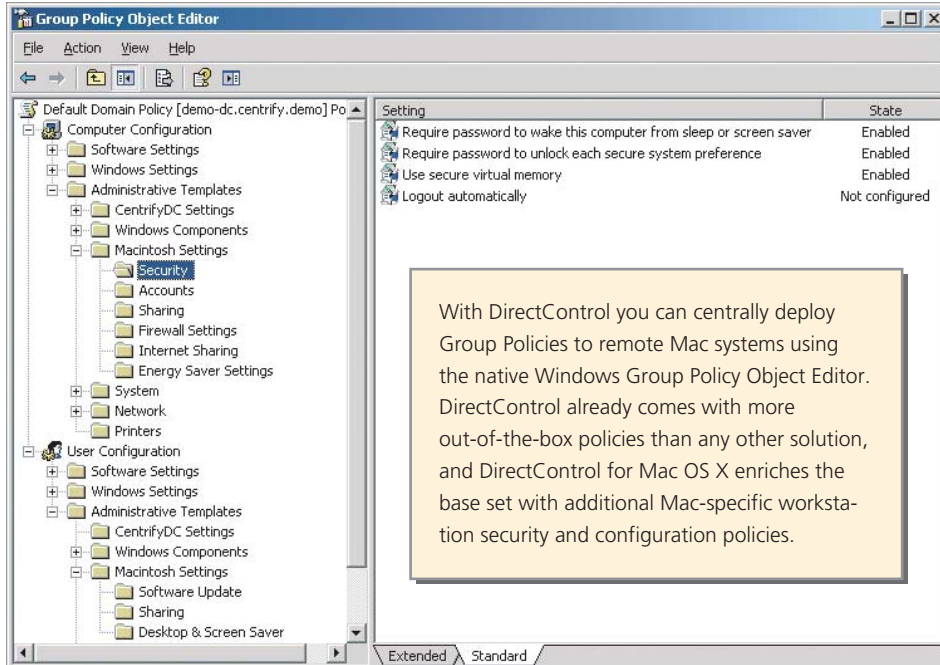
# Group Policy for Mac OS X

*Centrally secure and configure Mac OS X systems using the same Active Directory tools you use to manage Windows systems*

Centrify DirectControl is the only solution that enables IT managers to centrally secure and configure Mac systems through Active Directory Group Policy. Because Mac systems are used

primarily as workstations, Centrify has enriched its existing DirectControl for Mac OS X solution with a set of policies that have been tailored to the needs of IT managers who are responsible for the

security and configuration of these systems. Using the same Active Directory tools they use today for Windows systems, IT managers can set security and configuration policies for Mac systems without needing deep platform-specific knowledge.



With DirectControl you can deploy Group Policies to remote Mac systems using the native Active Directory Group Policy tools. DirectControl already comes with more out-of-the-box policies than any other solution, and DirectControl for Mac OS X enriches the base set with additional workstation-related security and configuration policies.

Group Policy support is built into the core DirectControl for Mac OS X product; there is no additional software to license, install or configure.

The table on the left summarizes the types of Group Policies provided and what they do.

Group Policy Categories	What They Do
<b>Desktop &amp; Screen Saver</b>	<ul style="list-style-type: none"> <li>Enforce screen saver</li> <li>Screen saver timeout</li> </ul>
<b>Security</b>	<ul style="list-style-type: none"> <li>Require password to unlock each secure system preference</li> <li>Require password to wake this computer from sleep or screen saver</li> </ul>
<b>Sharing</b>	<ul style="list-style-type: none"> <li>Services Settings (to turn on/off sharing for each service)</li> <li>Firewall Settings (to turn on/off firewall for each service)</li> <li>Internet Sharing Settings</li> </ul>
<b>Accounts</b>	<ul style="list-style-type: none"> <li>Disable automatic login</li> <li>Display Login Window Settings</li> <li>Show the Restart, Sleep and Shutdown buttons</li> <li>Enable fast user switching</li> </ul>
<b>Energy Saver Settings</b>	<ul style="list-style-type: none"> <li>Put display to sleep if inactive</li> <li>Put computer to sleep if inactive</li> <li>Put the hard disks to sleep when possible</li> <li>Wake when the modem detects a ring</li> <li>Wake for Ethernet network administrator access</li> <li>Allow power button to sleep the computer</li> <li>Restart automatically after a power failure</li> </ul>
<b>Software Update</b>	<ul style="list-style-type: none"> <li>Enable automatic software updates</li> </ul>

**SUPPORTED PLATFORMS**

DirectControl for Mac OS X runs on:

- Mac OS X 10.3 PPC
- Mac OS X 10.4 PPC
- Mac OS X 10.4 x86

For more info and to request an evaluation, visit:  
[www.centrify.com/mac](http://www.centrify.com/mac)

To learn more about Centrify or to request an evaluation of the Centrify DirectControl suite, contact us at:

**PHONE:** +1 (650) 961-1100  
**EMAIL:** [info@centrify.com](mailto:info@centrify.com)  
**WEB:** [www.centrify.com](http://www.centrify.com)



Copyright © 2005 Centrify Corporation. All rights reserved. Centrify and DirectControl are trademarks of Centrify Corporation. DS-007-2006-05-18.