

# Exchange Central

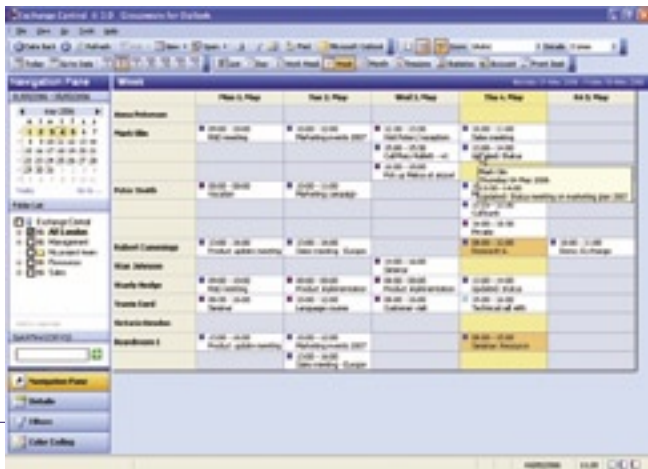
## About Time...

### Professional Team Calendaring for Outlook Users!

Exchange Central is an easy and effective group scheduling tool for Outlook users who are organizing; employees, meeting rooms, company vehicles or any other resources in Outlook.

Exchange Central is a professional planning tool for the Outlook user who wants to control and manage many calendars at a glance.

Anyone who works within a team, creating plans or booking resources, will enjoy the benefits of Exchange Central from day one.



### With Exchange Central you will get

- Intuitive and Team oriented views, providing the user with optimal overviews of many calendars
- RealTime calendaring with RealTime Service® - no usage of Free/Busy information
- Direct booking features
- On-demand filtering and color coding to locate appointments instantly
- Front desk tool to view user details from Active Directory and calendar information at a glance
- Front-end & back-end planning & booking / statistic facilities
- Print and export functionality – integrated with Microsoft Office®

Exchange Central will make your team's calendaring challenges, and resource scheduling headaches and worries disappear.

[www.add-on.com](http://www.add-on.com)

# Exchange Central

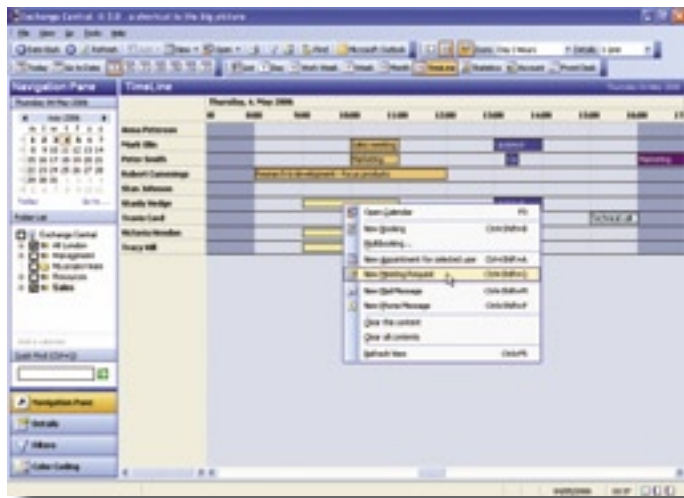
Microsoft Gold Certified Partner

## About Time...

### A shortcut to the big picture - overview people and resources at a glance...

Exchange Central will provide you with essential functionality for your team booking and planning challenges such as:

- RealTime Team Calendar functionality for Outlook users
- Intuitive and Team oriented views of many Outlook Calendars - at a glance
- Support overviews from one day to more than one year
- Enhanced planning and booking features
- Create customized groups or rely on pre-defined distribution lists (create groups based on location, skills or departments etc.)
- On-demand filtering and color coding
- Create time usage statistics and export these to Microsoft Excel®
- Be able to locate your colleagues instantly
- Support for Outlook permissions and private appointments



### Become more efficient with Exchange Central

Exchange Central provides you with a shortcut to the big picture. Exchange Central allows you to utilize your Microsoft Outlook® installation in the right way. Now you will be able to accomplish essential team planning and booking.

Allowing you to organize employees, colleagues, meeting rooms – any type of Exchange resource in the right way!

### Technical information

Exchange Central and RealTime Service® supports Microsoft Outlook® 2000 or higher, Microsoft Exchange 5.5 or higher.

### RealTime Service®

To ensure RealTime calendaring with Exchange Central you will install our backend service in your network. Our RealTime Service upgrades the built-in update functionality within Exchange Central to an automatic event driven update service. With minimum impact and maximum output it removes all fears of outdated information.

RealTime Service® is available in MSDE or SQL versions.

**Real time decisions  
demands  
RealTime information**

**Rely on Exchange Central!**

Add-On Products is a world-wide market leading provider of add-ons to the Microsoft Exchange & Outlook platform



**Add-On Products**  
Skovgade 2, 7100 Vejle, Denmark  
Email: info@add-on.com  
**Europe**  
Phone: +45 7944 7000  
Fax: +45 7944 7001  
**North America**  
Phone: +1 (905) 655-9262  
Fax: +1 (905) 655-9395



**Business Intelligence 101**  
Your Intelligent Source for Business Technology



Download a 30 days free trial version at Add-On Products website