

## What's New in AccessManager 3.0?

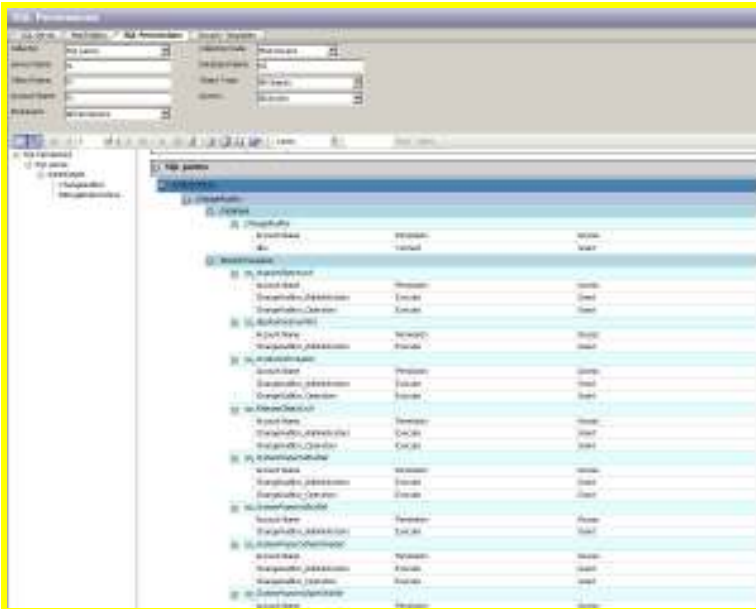
### **Drive Security and Compliance with Automated Access Management across Multiple Windows Applications — Active Directory, Exchange, SQL Server, and more**

Managing user access rights across distributed resources and applications can be a complex task. But it's a task required to enforce security and meet compliance requirements. NetPro AccessManager 3.0 provides automation and enforcement of resource access across critical Windows applications — Active Directory, Exchange, and SQL Server. Easily report on the state of security across your Windows-based infrastructure and better manage your security settings with workflow controls, automated business rules, naming conventions, and more.

With AccessManager 3.0, organizations can delegate administrative authority, control access changes, and enforce business rules for more secure and scalable Active Directory management — all within Microsoft Active Directory Users and Computers (ADUC). AccessManager 3.0 also snaps into NetPro's services-oriented architecture to provide unified workflow and process management. Quickly add new capabilities without the usual ramp time and complexity that comes with installing, training, and maintaining multiple tools and point solutions.

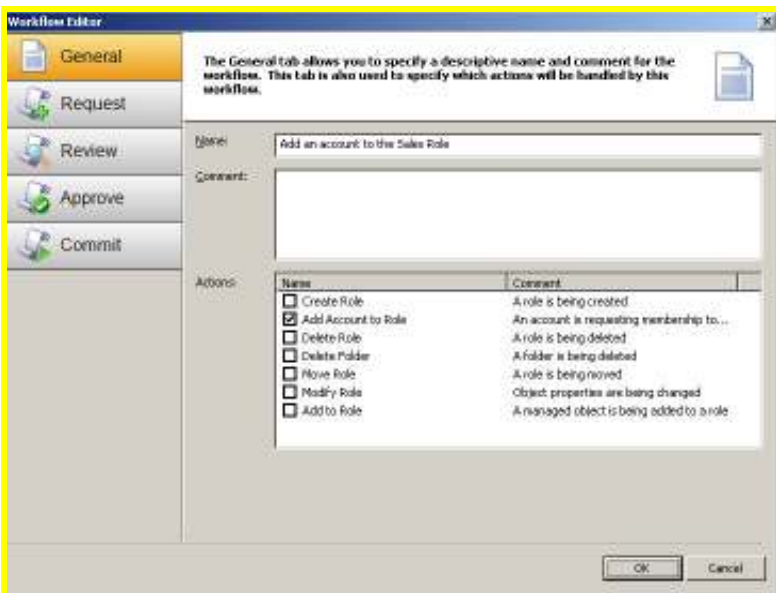
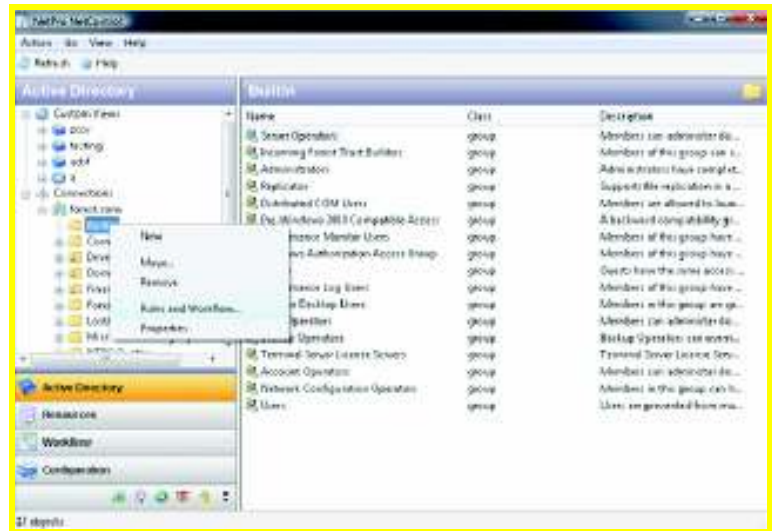
#### **New in AccessManager 3.0:**

- **Drive compliance with centralized role-based management for Exchange and SQL server permissions:** Tighten security and lower administration costs through simplified, role-based administration and enforcement for Exchange and SQL.
- **Report on Enterprise-Wide Access to Prove Compliance:** New built-in reports provide access reporting for Exchange and SQL Server. Get a complete picture of user access rights, listing every resource they have or have had access to. Give auditors a complete picture — who has access to what? Who has specific rights over certain resources? Who had access to a resource last month?
- **Automate Business Processes to Save Time:** Easily create business rules for all Active Directory objects and attributes to automate and control AD management tasks — naming conventions, group membership management, pre-populating attributes, and more. Integration with ADUC ensures the least impact on IT staff and environment.
- **Enforce Approval Processes for Greater Control:** Track and control changes through a customizable system of reviews and approvals. Easily prove who has submitted, reviewed, and approved change requests. Flexible options allow for in-process communications such as rejection comments, email notifications, and more.



**SQL Server Permissions Report:** Get a complete picture of user access rights, listing every resource they have or have had access to.

**ADUC Integration:** Integrate with Microsoft Active Directory Users and Computers (ADUC) to optimize AD management.



**Workflow Wizard:** Customizable workflow wizard for all common Active Directory management tasks allows you to easily create rules for all Active Directory objects and attributes.